



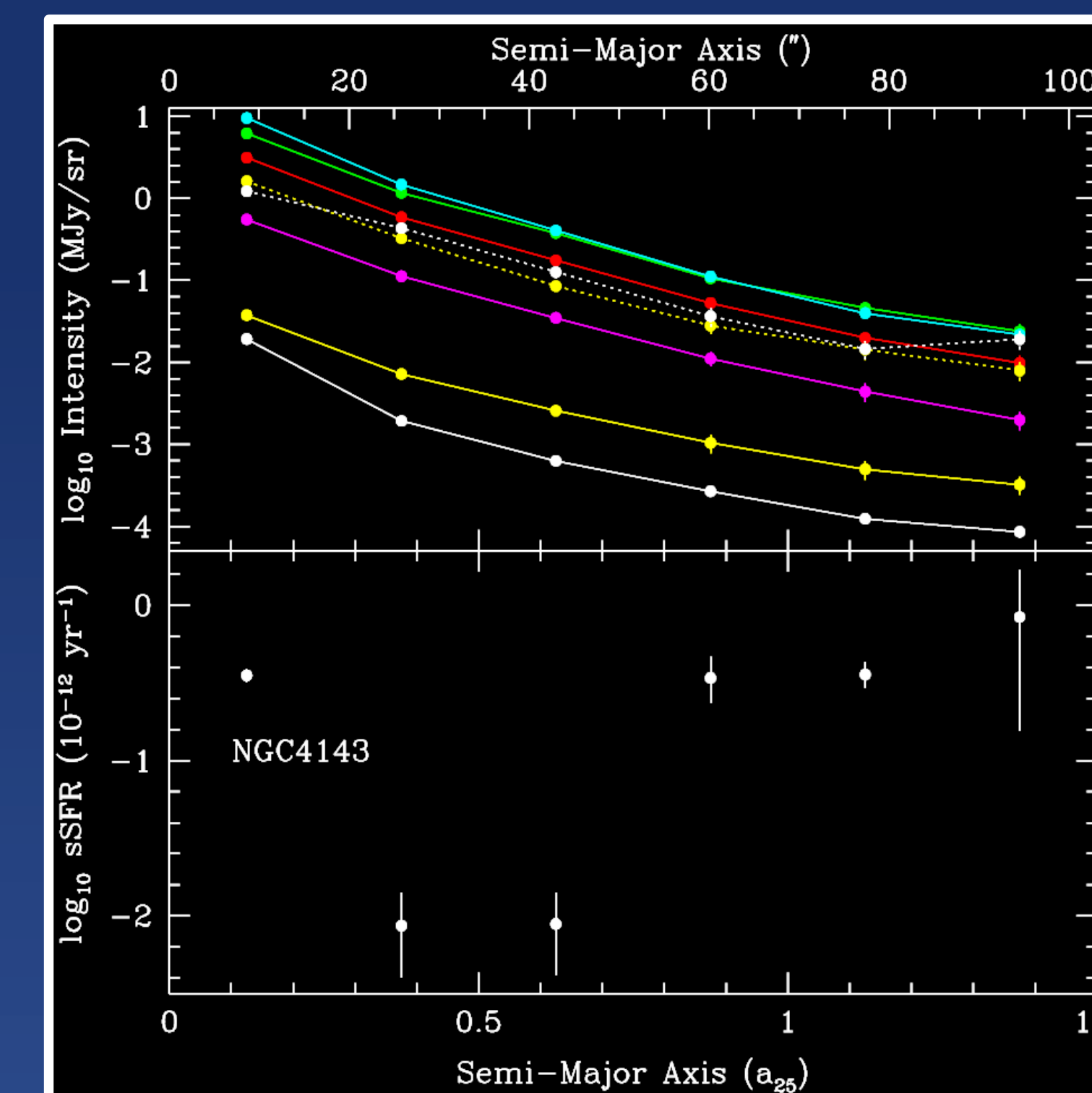
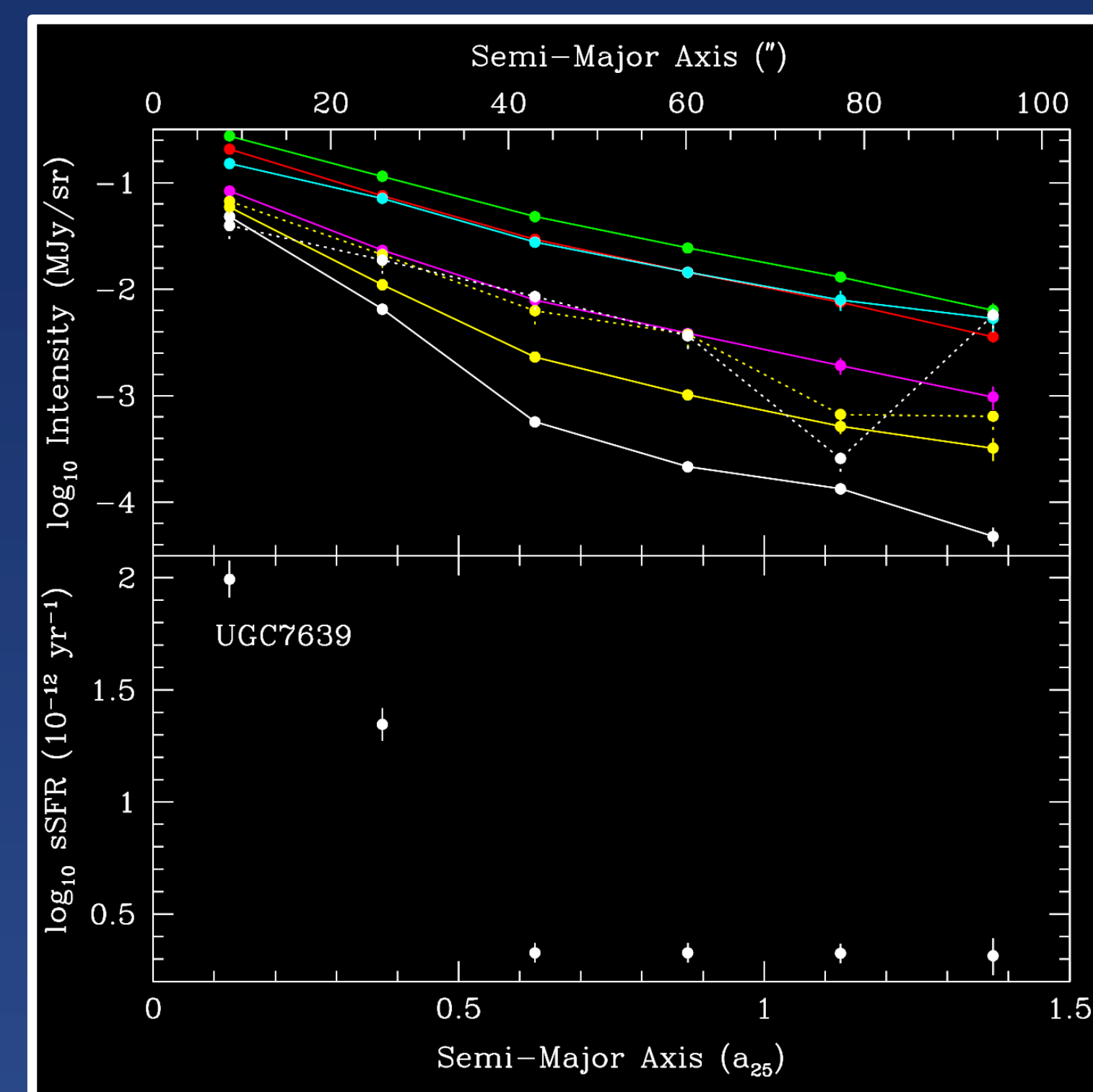
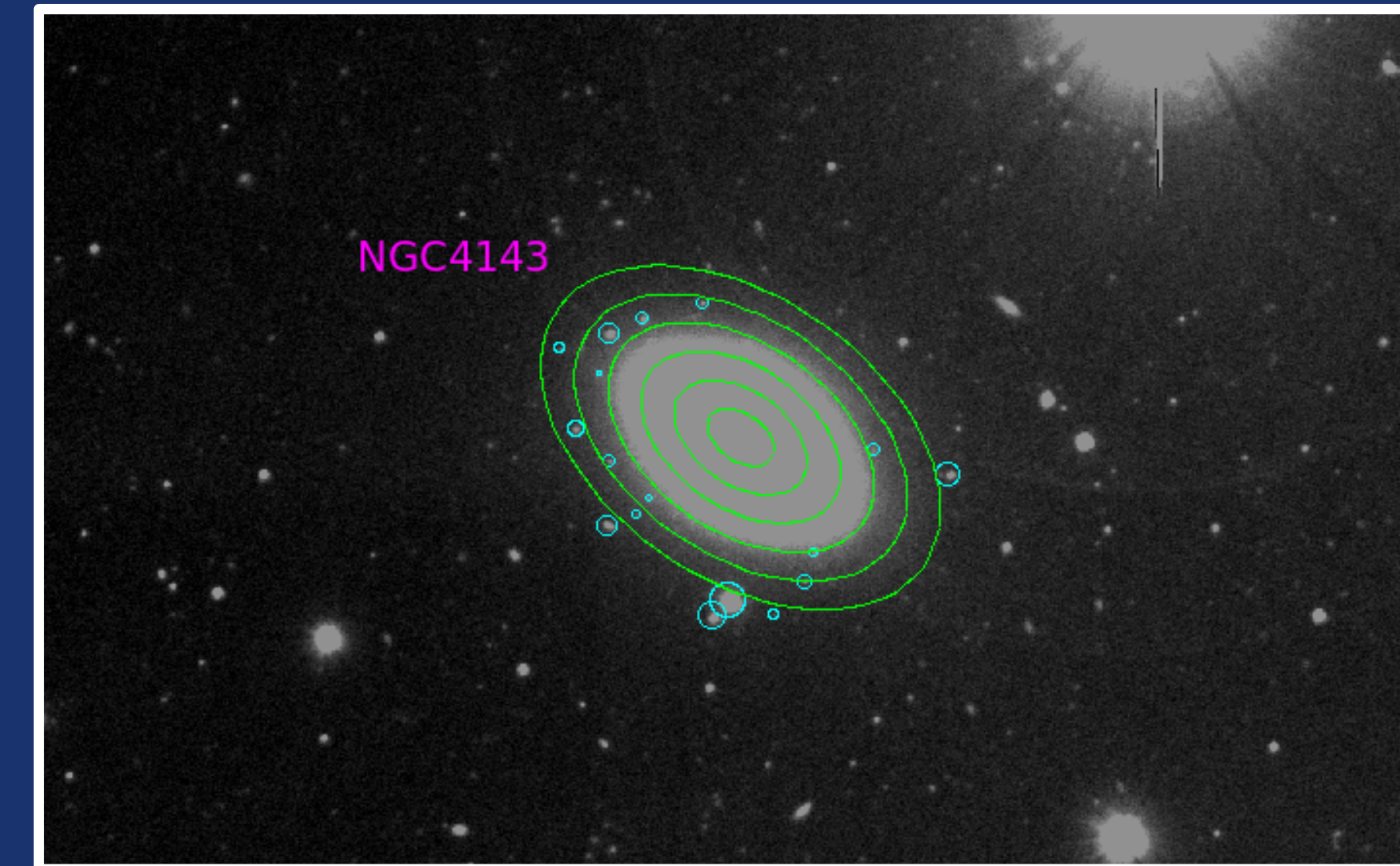
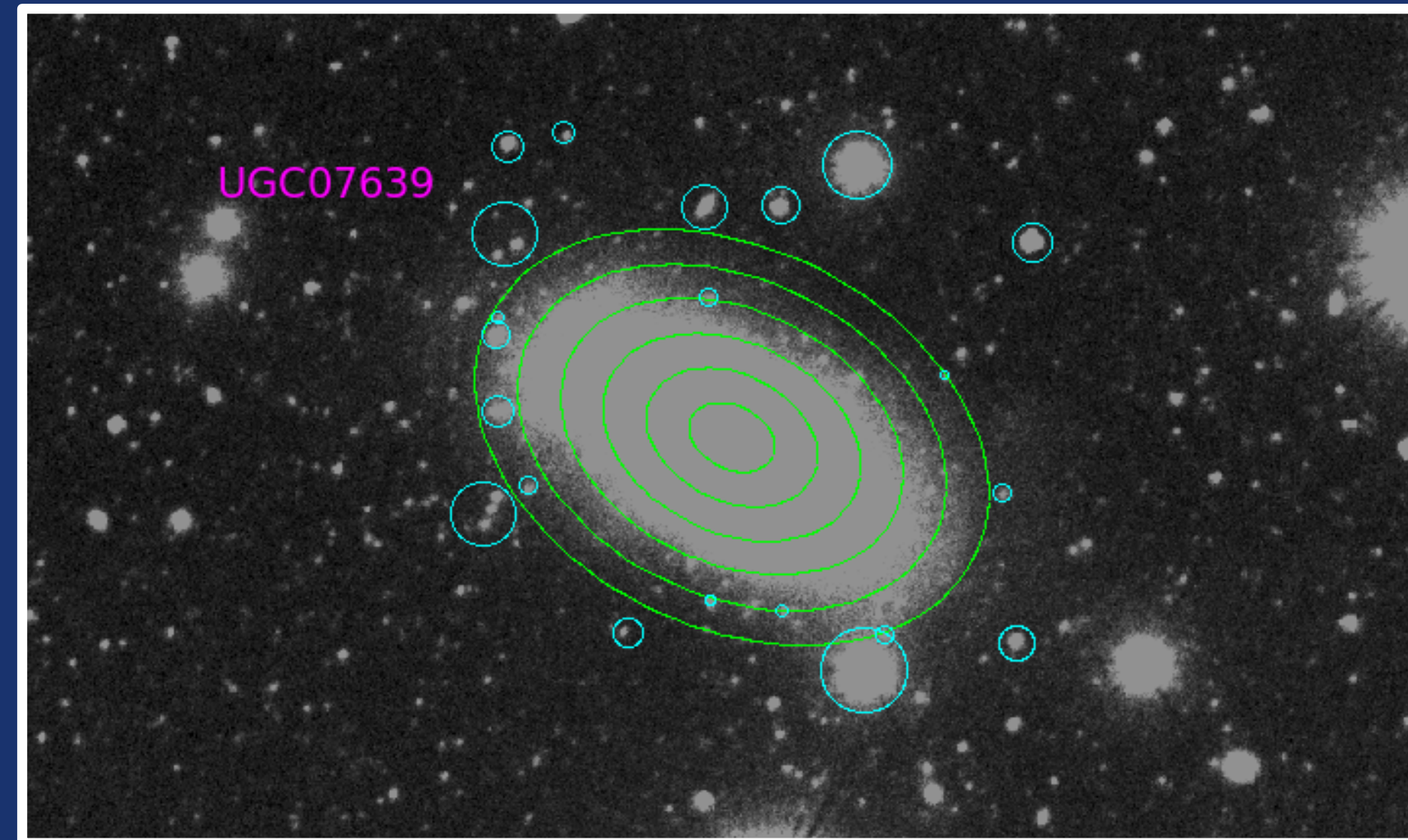
# EDGES: Radial Star Formation Histories of NGC4143 and UGC07639



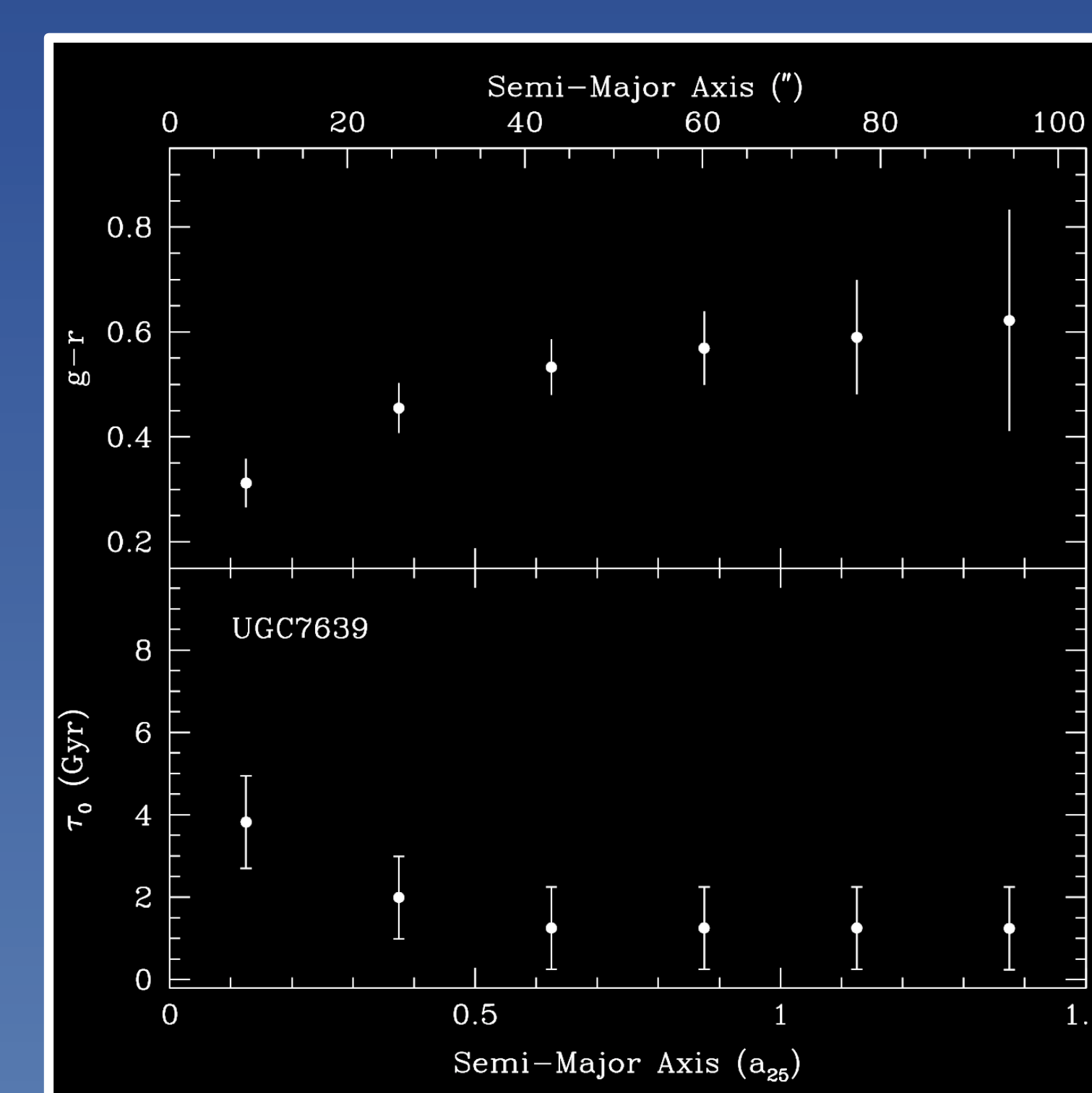
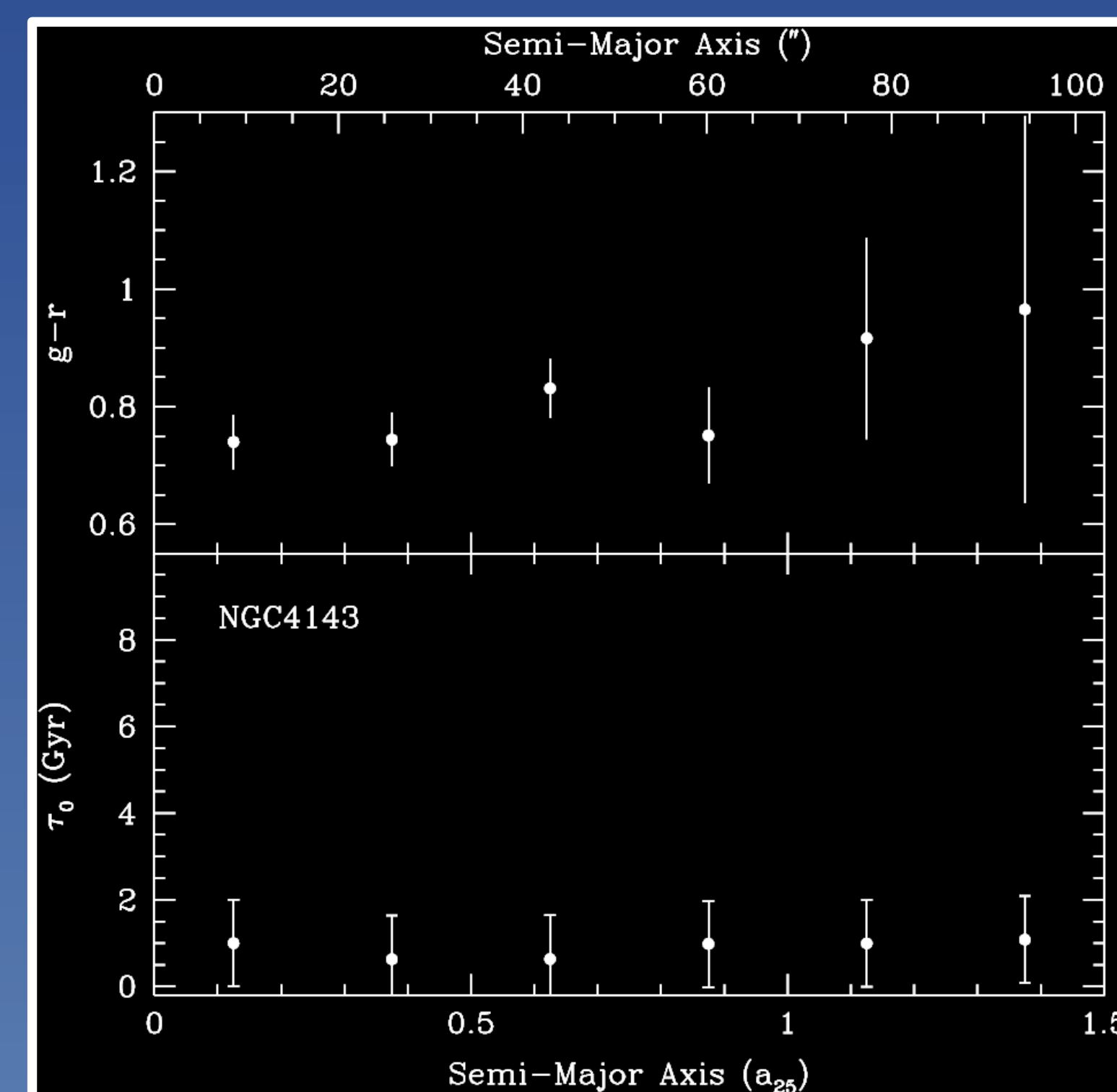
Jacob Pilawa (Colgate University), Kristin Anderson (Cal State U. Long Beach), Louis Bran (Cal State U. Channel Islands), Isaiah Cox (East Tennessee State U.), Carolyn Drake (Whitman College), Nathan Lee (U. Wyoming), F. Alexander Slane (U. Wyoming), Susana Soto (Cerritos College), Emily Jensen (U. Wyoming), Jessica Sutter (U. Wyoming), Jordan Turner (U. Wyoming), Henry Kobulnicky (U. Wyoming), Daniel Dale (U. Wyoming)

## BACKGROUND

New deep  $u$ ,  $g$ , and  $r$  imaging was obtained on the Wyoming Infrared Observatory 2.3 meter telescope for NGC4143 and UGC07639, two galaxies in the Extended Disk Galaxy Evolution Science survey (EDGES). These data are coupled with deep GALEX ultraviolet and Spitzer/WISE infrared imaging to study the radial variations in the spectral energy distributions.



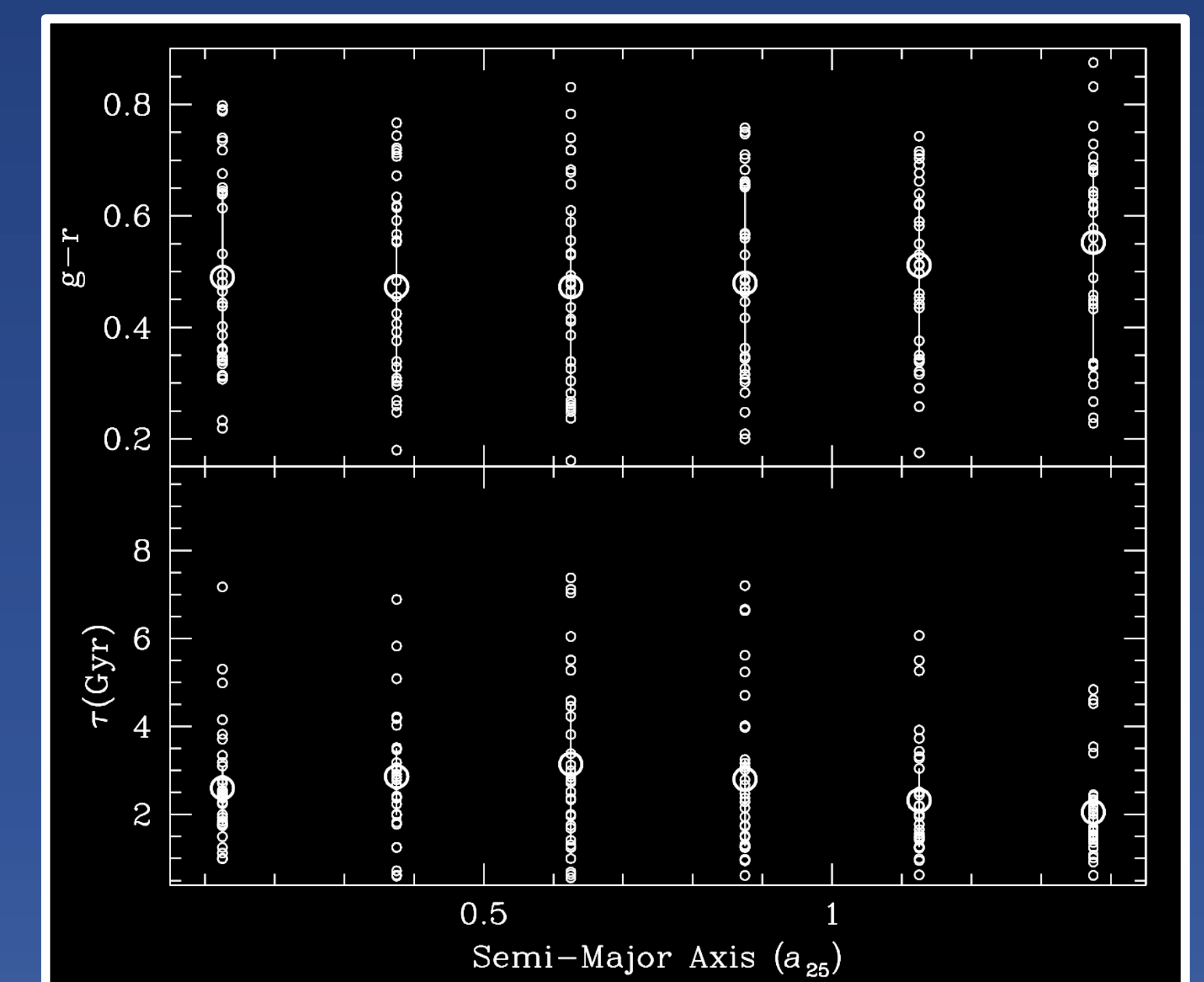
The plots above are the surface brightness profiles (top) and specific star formation rates (bottom) as functions of radius for UGC07639 (left) and NGC4143 (right). The surface brightness profiles are in several filters – 3.6 micron in cyan,  $r'$  in green,  $g'$  in red, 12 micron in yellow-dotted, 24 micron in white-dotted,  $u'$  in magenta, NUV in yellow, and FUV in black. The specific star formation rates (star formation rate per unit mass) help us characterize very active star forming regions (high values) and less active star forming regions (low values).



Above are the  $g-r$  color and characteristic epoch of star formation for UGC07639 (left) and NGC4143 (right). Regions of galaxies that are older (redder) have larger  $g-r$  values, whereas younger regions (bluer) have smaller  $g-r$  values. The bottom panel is the fitted  $\tau$  value for each radius.  $\tau$  is a timescale where  $\tau = 0$  Gyr is the onset of star formation and  $\tau = 13.7$  Gyr would be today. Older epochs of star formation have smaller values for  $\tau$ , whereas younger epochs have larger values for  $\tau$ .

## RESULTS

The plot below is the sample-wide  $g-r$  and characteristic epoch of star formation ( $\tau$ ) values. NGC4143 and UGC07639 are part of a larger sample of 32 galaxies studied by the 2014 and 2018 University of Wyoming REU students. The larger circles are ensemble averages, and the bars represent the 25<sup>th</sup> and 75<sup>th</sup> percentile ranges. The  $g-r$  plot (top) shows the color of galaxies at various radii, and the  $\tau$  graph (bottom) shows the characteristic epoch of star formation (how many years after the initial onset of star formation – lower tau values correspond to older stars).



## ACKNOWLEDGEMENTS

This work is supported by the National Science Foundation under REU grant AST 1560461. Special thanks to my REU cohort, Danny, and Chip for making the experience so memorable.

# Wyoming

